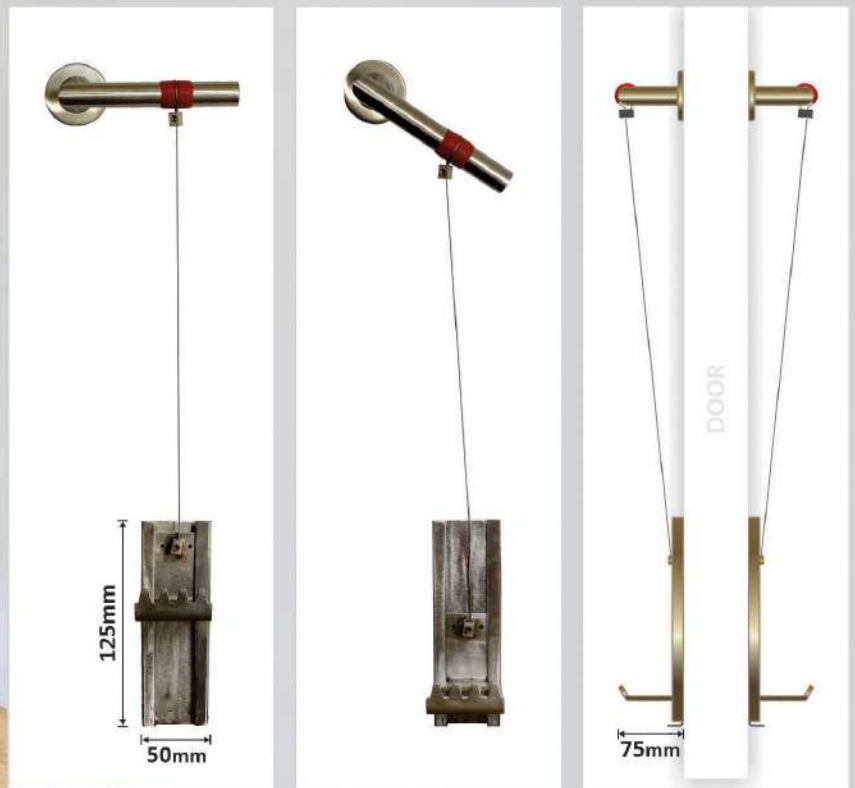


Tyché®
Door Opener

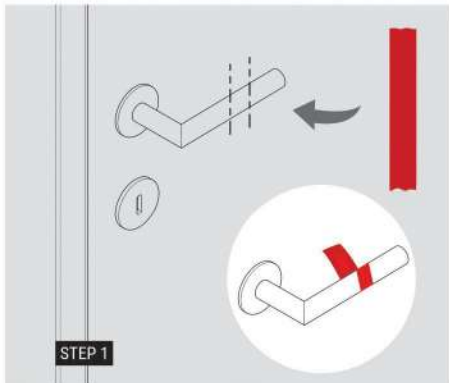


Open Door Hands Free

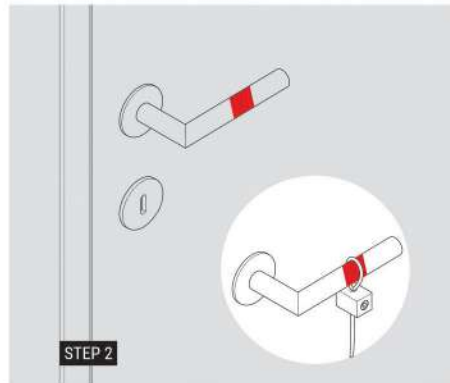


Installation Guide

Tyché® Door Opener



STEP 1
Stretch and Wrap Tape 69 onto Lever Handle.



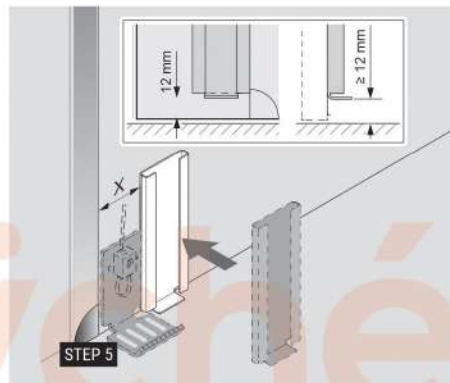
STEP 2
Position the wire loop on Lever Handle.



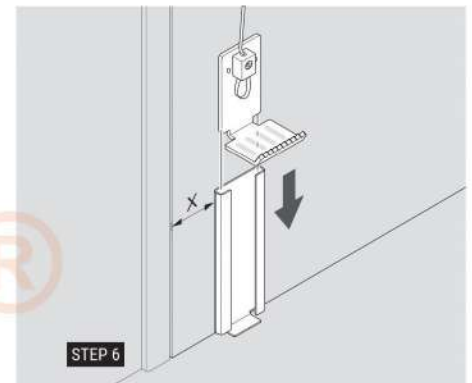
STEP 3
Tighten the loop with Allan Key, Provided in Kit.



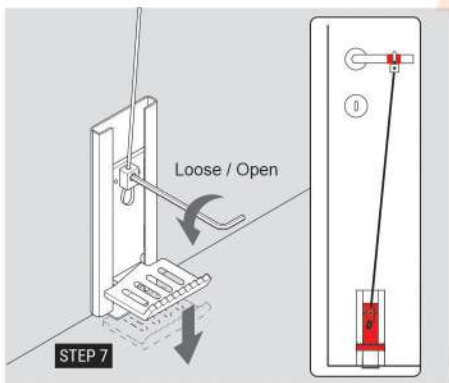
STEP 4
Clean the Door Surface at the location for mounting the Door Opener mount.



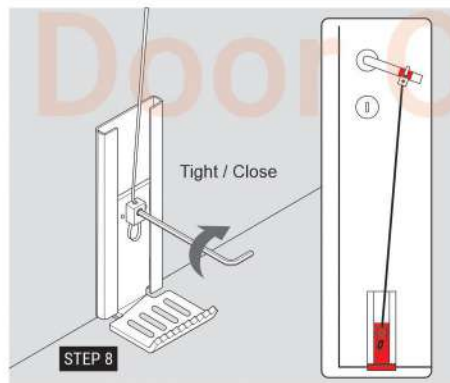
STEP 5
Stick the mount with 12mm clearance from the door bottom.



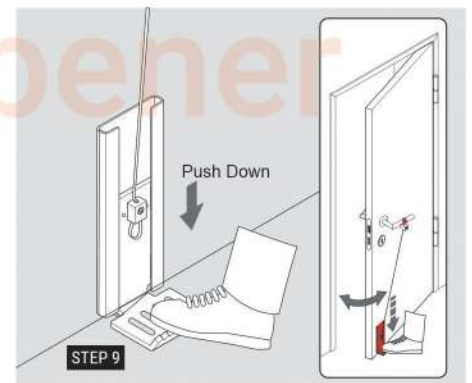
STEP 6
Insert the Pedal in mount.



STEP 7
Check & Adjust the Pedal with Lever in Closed position.



STEP 8
Check & Adjust the Pedal with Lever in Open position.



STEP 9
Check for minor adjustments, Door Opener ready to use.

Týché®
Door Opener

Hands Free Door Opener



Don't Touch
Door Handle

Use Toe
to Open Door

- Open Doors Hands-Free: Hygienic Way
- Retrofit Design
- Ready to use in 5 minutes
- No Drilling, Sticks to the Door
- Maintenance-free
- Removable
- Made in INDIA

